

Brief Introduction

CSPower 12V/24V LFP series batteries, available in a variety of capacities, to be used as the building block of a larger energy storage system by assembling in series or parallel. The modular approach allows for flexible configurations to match almost any voltage and capacity requirements. Prototype system can be assembled faster than any time previously, therefore reducing project development time and decreasing non-recurring engineering expense. It has been successfully used in energy storage systems, AGV, forklifts etc. Excellent cycle life and maintenance free design offers end-users complete peace of mind.



Long Life



✓ **25%** *Faster Charge*
 ✓ **50%** *Lighter*
 ✓ **50%** *Less Cost Overall*

Applications

- Solar Energy/Off-Grid Solar System
- BTS Stations, Telecom System, BT Tower
- Wind Energy System, Pump, Marine
- UPS System, EPS System
- Wheel chair, Golf Car, Sweeper
- Caravan, AGV, Forklifts,
- Electric Powered Vehicles

General features

- Able to operate at -20~60°C
- ≥ 6000 times Cycles
- Robust Casing with Flame-retarded plastic UL94-V0, IP56
- Long life high stability under high-temp. environment (no cooling needed)
- Build in BMS
- Able to operate at -20~60°C

Complied Standards

IEC60896-21/22	RoHS/Reach
PSE/UL	GB/T19638
IEC61427	CE/ISO



LiFePO4 Advantage

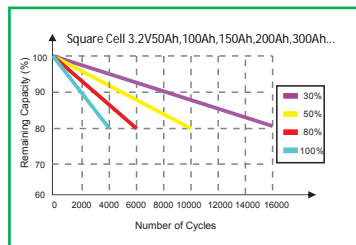
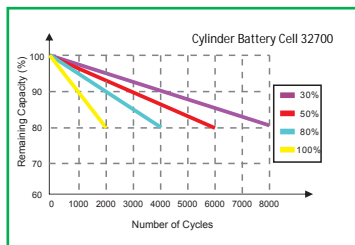
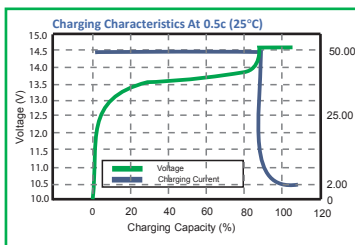
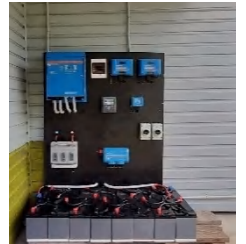
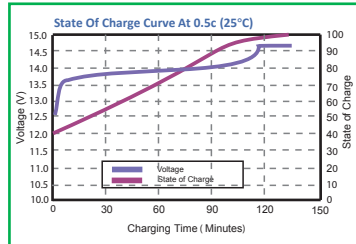
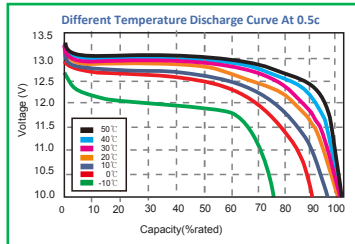
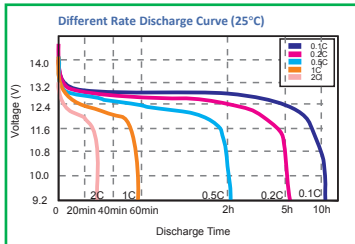
- Battery Management System built-in which protects the battery from short circuits, overloads and deep discharge.
- Built-in automatic protection for over-charge, over-discharge & over-temperature conditions
- The BMS also balances cells in order to guarantee longer battery life.
- Safe Lithium Iron Phosphate Technology
- Flame retardant system to UL94V-0
- Thousands of cycles, under normal conditions
- Excellent high temperature performance -20°C to 60°C
- Low self discharge rate of 2 years before required recharging
- High energy density and conversion efficiency
- Can use most standard VRLA chargers for this system
- Environmental Friendly, without any heavy metals
- Maintenance free throughout lifetime

LFP Series LifePO4 Battery Items specifications

Model	Voltage (V)	Capacity (Ah)	Dimension (mm)			Weight (kgs)	Cell connect	Cell Cycle 100% DOD
			L	W	H			
LFP12V7.0	12.8	7	151	65	94	0.71	4S1P C	≥6000 50%DoD
LFP12V12	12.8	12	151	99	99	1.5	4S2P C	≥6000 50%DoD
LFP12V20	12.8	20	181	77	170	3.5	4S3P C	≥6000 50%DoD
LFP12V40	12.8	40	267	77	172	5.4	4S6P C	≥6000 50%DoD
LFP12V50	12.8	50	223	150	177	6.5	4S8P S	≥6000 80%DoD
LFP12V60	12.8	60	223	150	177	7.2	4S10P C	≥6000 50%DoD
LFP12V75	12.8	75	256	165	210	9.4	4S13P C	≥6000 50%DoD
LFP12V100	12.8	100	330	173	216	14	4S16P S	≥6000 80%DoD
LFP12V120	12.8	120	406	173	236	16	4S20P S	≥6000 80%DoD
LFP12V150	12.8	150	490	171	240	20	4S25P S	≥6000 80%DoD
LFP12V200	12.8	200	520	238	218	25	4S33P S	≥6000 80%DoD
LFP12V300	12.8	300	520	238	218	39	4S33P S	≥6000 80%DoD
LFP24V10	25.6	10	181	77	170	3.5	8S2P C	≥6000 50%DoD
LFP24V20	25.6	20	223	120	175	6	8S3P C	≥6000 50%DoD
LFP24V50	25.6	50	330	173	216	13	8S1P S	≥6000 80%DoD
LFP24V100	25.6	100	520	238	218	25	8S1P S	≥6000 80%DoD
LFP24V150	25.6	150	520	266	220	32	8S1P S	≥6000 80%DoD
LFP24V200	25.6	200	520	266	220	39	8S1P S	≥6000 80%DoD



Performance Characteristics



Notice: Voltage Based on 4S 3.2 Cell 12.8V

Address: Introduction building, Xingdong industry Park, NO.61, Liuxian 2nd Road, Baoan, Shenzhen, China.

Phone: +86-755-29123661 | Email: Sales@csbattery.com

Website: <https://www.csbattery.com>